



GNAROJIN PARK

Gnarojin Park was established in 1992 to celebrate the Centenary of Local Government in Narrogin. It is a long, linear park, running north south along the Narrogin Brook, and is the site of a range of public art conveying both Noongar and European history.

The park is a great spot for families and others to play, learn, relax, have a picnic, or enjoy a walk or cycle on the 2km (return) trail around the creek.



Central Picnic and Play Area

Parking and facilities are located on the corner of Gordon and Kipling Streets. Shaded picnic areas adjoin a children's playground and a skate park for the youth.

Newton House Barbecue

Built on the site of the Newton House, the barbecue area with its stone chimney, huge old Metter's stove and picnic tables topped with hand-painted tiles evokes a pioneer home surrounded by a cottage garden. Newton House is a tribute to the pioneering spirit of the early settlers of the district.

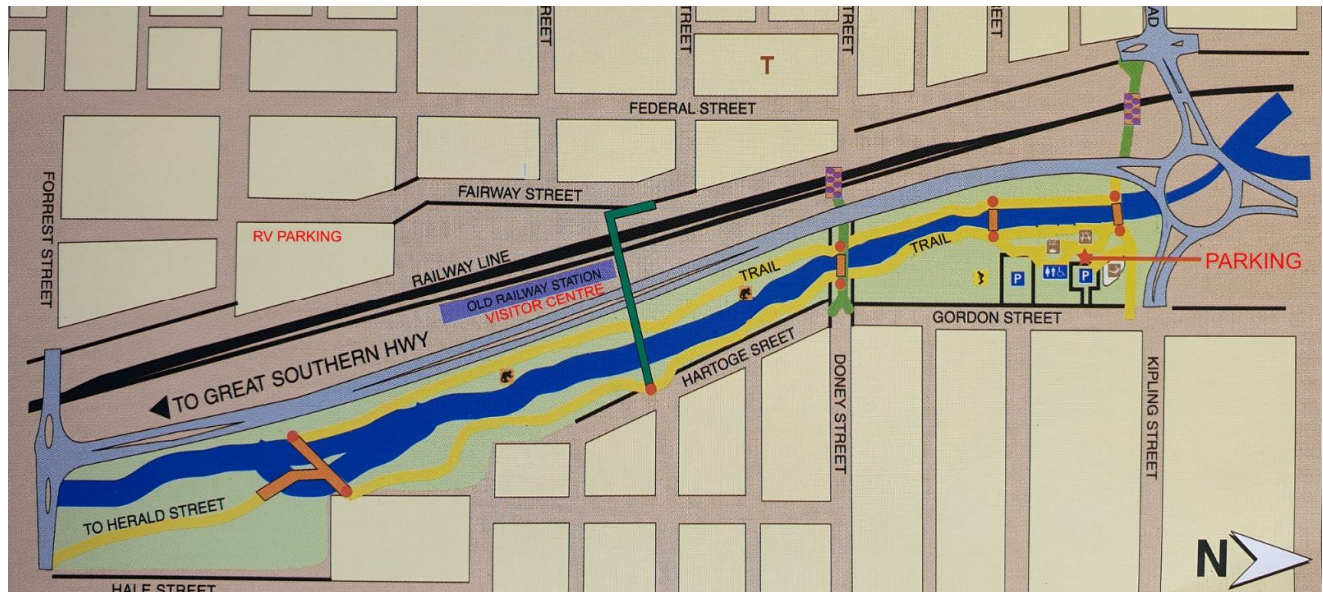
It also has its own intriguing story told in the hand-painted tiles, which depict a bed where a young girl with an infectious disease was nursed after the hospital refused to admit her. Risking their own safety, the Newton family gave the child and her mother shelter.



Tour the Trail

A 2km walk/cycle trail around the creek contains a range of historic and cultural attractions, and an outdoor gym for fitness followers. Several linking bridges make a range of short loops possible.

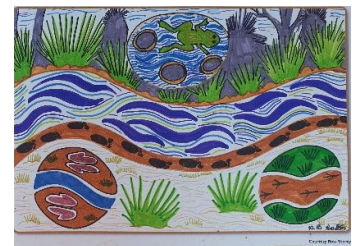
Are you into Orienteering.? Then why not try [this Orienteering Map](#) designed for Gnarojin Park by Tony Simkins.



Noongar Interpretive Panels and Dreaming Sites

Five interpretive panels have been installed along the trail— these address important elements of the Noongar connection to this part of the Brook:

- The Peppermint Tree: Birthplace, and meeting place at Narrogin Brook: A place of cultural and practical significance
- The Corroboree Grounds: Connecting to the old people
- Dignity from history: The story behind the Noongar Dreaming Sites project
- The way it was: Life in the Loco Shed Camps



Discover the dreaming sites designed by Aboriginal artists and elders to represent stories of local Noongar heritage and culture:

- Men and women meet while walking (*Koornaming koorliny*) Men’s corroboree magic ground (*Noongar midar bulya boojoor*) Women’s magic ground (*Yorka midar bulyar boojoor*)
- Rainbow running water pools (*Walken kebjtj manang*)
- Campfire grounds (*Kallep boodjera*)
- Totems mixing together (*Couburne wirdanging*)
- Ochre in uneven ground (*Mardaa boodjera dardong*)



The Centenary Pathway

Extending from north to south along the eastern bank of the Brook, the Centenary Pathway contains 100 black dolerite tiles, each depicting one or more events in the hundred years since Narrogin became an independent local government area in 1892. Collect a brochure from the Visitor Centre to discover an intriguing collection of stories about life in Narrogin over the years as you walk along the Pathway.



Other artworks

A range of other artworks, of both Noongar and European origin, have been installed at various locations in the park. Why not take a walk (or a ride) and see what else you can find? Most have explanatory signage, and some have QR codes linking to more detail and even digital footage.